

RESIDENTS NEWSLETTER

FORTHCOMING BUS STOP IMPROVEMENTS, THE KNAPP/BEDWYN RAIL STATION, GREAT BEDWYN

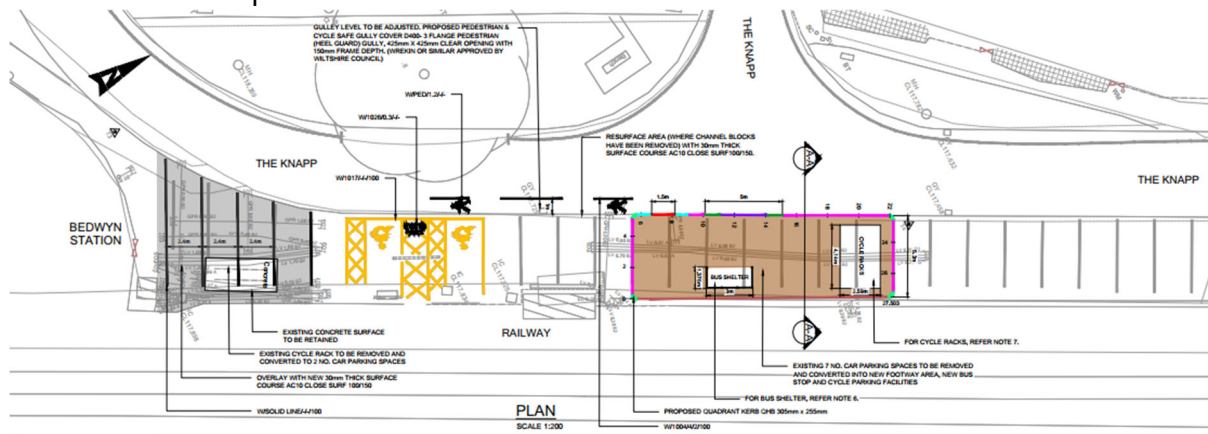
BACKGROUND

Wiltshire Council has been successful in securing funding to deliver bus stop improvements at Bedwyn Rail Station through the GWR 'Customer and Community Improvement Fund'. Having identified difficulties experienced by bus users due to the poorly positioned bus stop location, a solution has been identified to create a multi-modal hub close to the station entrance to enhance accessibility and make using the demand responsive bus service easier for passengers.

WHAT DOES THE SCHEME INCLUDE?

The scheme will see the replacement of car parking spaces adjacent to the station entrance with a newly constructed hardstanding area providing a new bus stop with bus shelter and raised bus kerb access to make boarding and alighting the bus easier. The existing cycle parking and shelter will be relocated to this hardstanding which allows the repurposing of the current cycle spaces to become car parking, replacing the spaces used by the new bus stop.

As well as being used for local bus services, this will be utilised for the rail replacement bus services when in operation.



WHEN WILL THE WORKS COMMENCE AND HOW LONG WILL THEY TAKE?

Construction work is due to commence on **Monday 10th March 2025** and is anticipated to take approximately two weeks to complete. During this time, parking immediately opposite the station entrance will be unavailable as will a number of spaces adjacent to the station platform entrance. No parking cones will be set out in advance of works taking place to show where parking should not occur. We would like to thank you in advance for keeping these spaces clear.

Wiltshire Council would like to take this opportunity to thank you for your patience and co-operation whilst these very worthwhile works are carried out.

WHO CAN I CONTACT FOR FURTHER INFORMATION?

During normal working hours

Contact : Kirsty Rose 0300 456 0100 or integrated.transport@wiltshire.gov.uk
Wiltshire Council Customer Care on: 0300 456 0100.

Outside of Normal working hours (Emergencies only) Refer to site information boards.